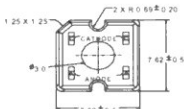


### TF916Orange

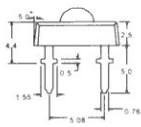
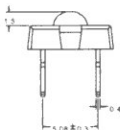
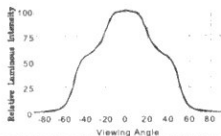
### PACKAGE CONFIGURATION

#### DESCRIPTION

Dice Material : AlGaInP Orange Red  
 Light Color : Orange Red Color  
 Lens Color : Water Transparent



#### RADIATION PATTERN



Tolerance ± 0.25 mm

#### ABSOLUTE MAXIMUM RATINGS AT Ta = 25 °C

PARAMETER	MAX.	UNIT
Power Dissipation	140	mW
Continuous Forward Current	50	mA
Peak Forward Current ( 1/10 Duty Cycle , 0.1ms Pulse Width )	100	mA
Reverse Voltage	5	V
Derating Linear From 50°C	0.9	mA/°C
Operating Temperature Range	-40 to +100	°C
Storage Temperature Range	-55 to +100	°C
LED Junction Temperature	125	°C
Soldering Preheat Temperature	100 °C for 30 seconds	
Lead Solder Temperature ( 1.5mm Below Seating Plane )	260 °C for 5 seconds	

#### ELECTRICAL / OPTICAL CHARACTERISTICS AT Ta = 25 °C

SYMBOL	PARAMETER	TEST COND.	MIN.	TYP.	MAX.	UNIT
V <sub>F</sub>	Forward Voltage	I <sub>F</sub> = 50mA		2.3	2.8	V
I <sub>R</sub>	Reverse Current	V <sub>R</sub> = 5V			100	µA
λ <sub>p</sub>	Peak Emission Wavelength	I <sub>F</sub> = 50mA		623		nm
λ <sub>d</sub>	Dominant Wavelength	I <sub>F</sub> = 50mA		617		nm
2θ <sub>1/2</sub>	Viewing Angle	I <sub>F</sub> = 50mA		90		Deg
I <sub>V</sub> / Φ <sub>V</sub>	Luminous Intensity / Total Flux			0.7		cd/lm
Rθ <sub>J-pin</sub>	Thermal Resistance			125		°C/W

#### BIN GRADE LIMITS ( I<sub>F</sub> = 50 mA ) Total Flux / lm

Bin	E	F	G	H	I	J
Min.	2.2	2.8	3.6	4.7	6.0	7.8
Max.	2.8	3.6	4.7	6.0	7.8	10.0

Tolerance ± 15%lm

\*Dominant Wavelength, λ<sub>d</sub> is according to CIE Chromaticity Diagram base on color of the device

\*θ<sub>1/2</sub> is the off-axis angle where the luminous intensity is one half the on-axis intensity.